

COMPANY PROFILE



SUNRISE PUBLICATIONS



Table of Content



ABOUT COMPANY



VISION / MISSION



PROCESS



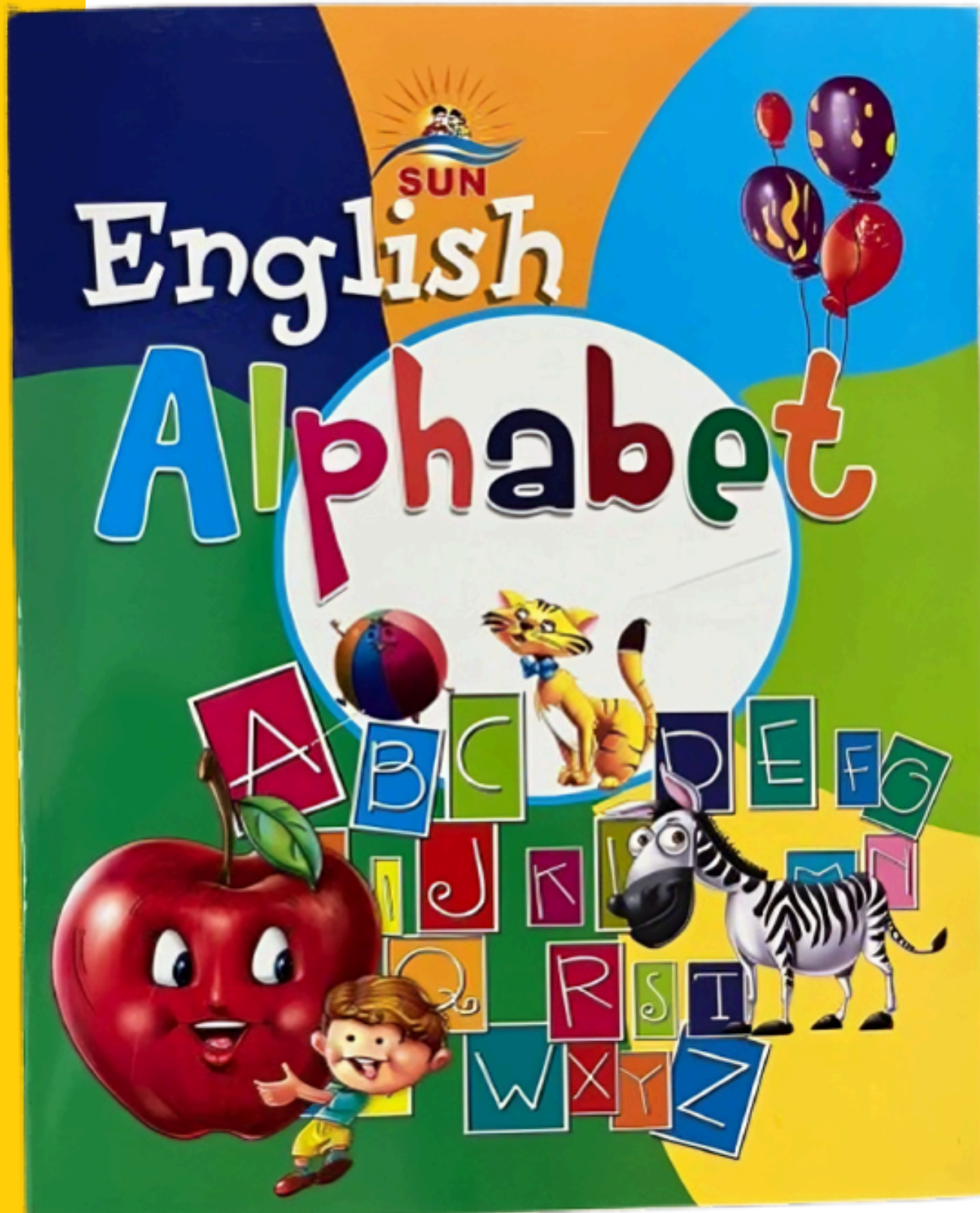
INFRASTRUCTURE



CONTACT



About Company



- Founded in 2000 by our Managing Director, Mr. T. Prabakaran, our company has established itself as one of the leading brands in book printing and publishing. With over 20 years of experience in the industry, we have built a reputation for delivering high-quality products using state-of-the-art in-house machinery.
- We proudly supply to more than 1000+ schools across India, ensuring timely delivery and competitive pricing. Our integrated production facility allows us to maintain strict quality control, meet tight deadlines, and offer cost-effective solutions tailored to our clients' needs.
- We are committed to providing the best printing and publishing services in the industry.

The Numbers

```
graph TD; A((The Numbers)) --- B((20+ Years of working experience.)); A --- C((10000+ Happy Customers)); A --- D((1000+ Schools All over India));
```

20+

Years of working
experience.

10000+

Happy Customers

1000+

Schools All over India



**Our
Value**

Mission

To make education accessible to all by providing high-quality, affordable books and educational materials, ensuring that every child, regardless of their background, has the opportunity to learn and grow.

Vision

To be a driving force in education, enabling even the most underprivileged communities to access quality learning resources, fostering a world where knowledge knows no boundaries.

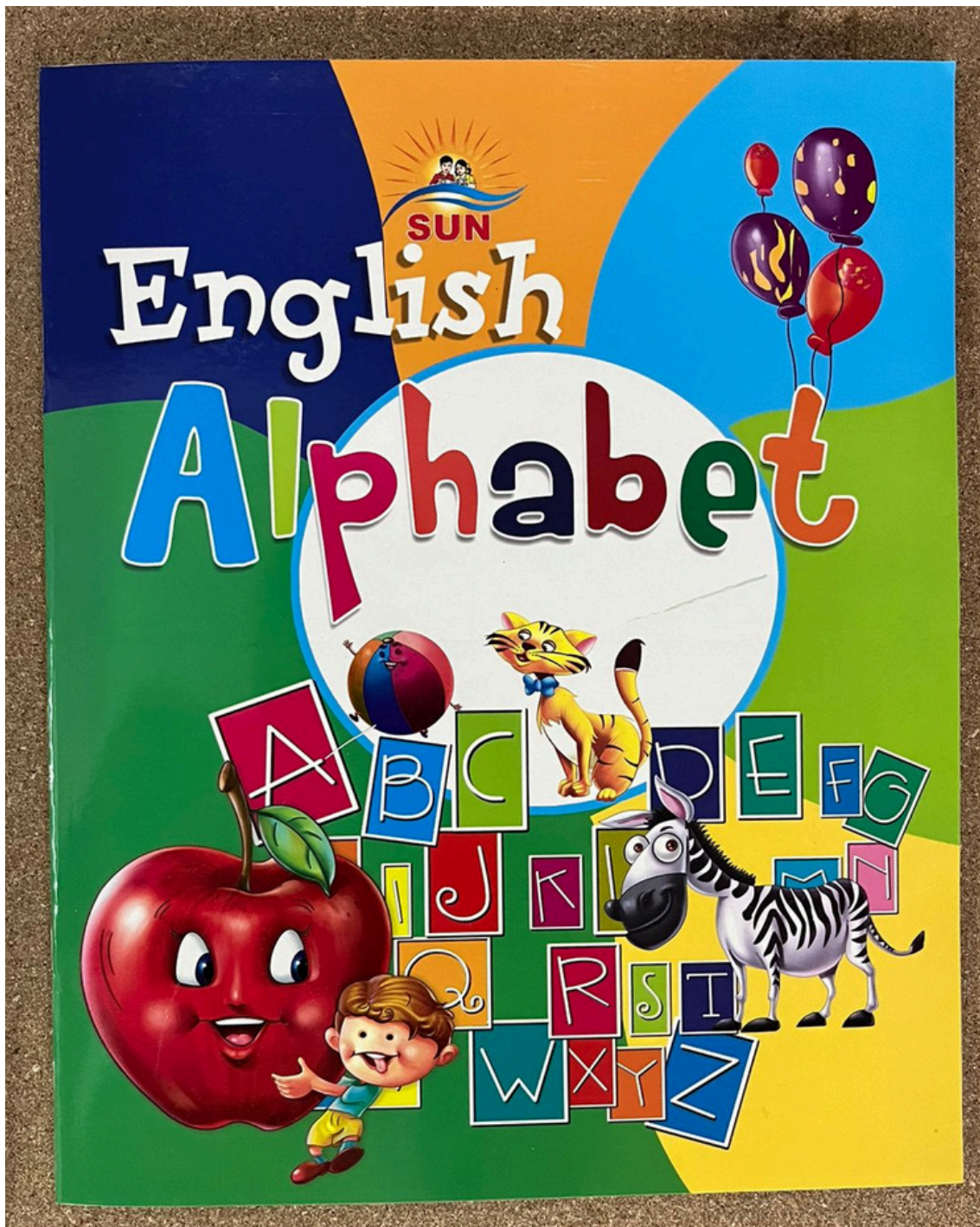


T. Prabhakaran

MANAGING DIRECTOR

- The book industry is more than just printing and binding—it's about creating a gateway to knowledge and imagination. Since 2000, we have strived to make quality education accessible to all by offering affordable, high-quality books. Our journey of over two decades has been driven by a commitment to excellence, timely delivery, and innovation in printing technology.
- At our core, we believe that every child, regardless of their background, deserves access to quality educational materials. This vision keeps us dedicated to serving over 1000+ schools across India. By continuously investing in state-of-the-art machinery and skilled professionals, we ensure that our products meet the highest standards of quality and affordability.

Our Products



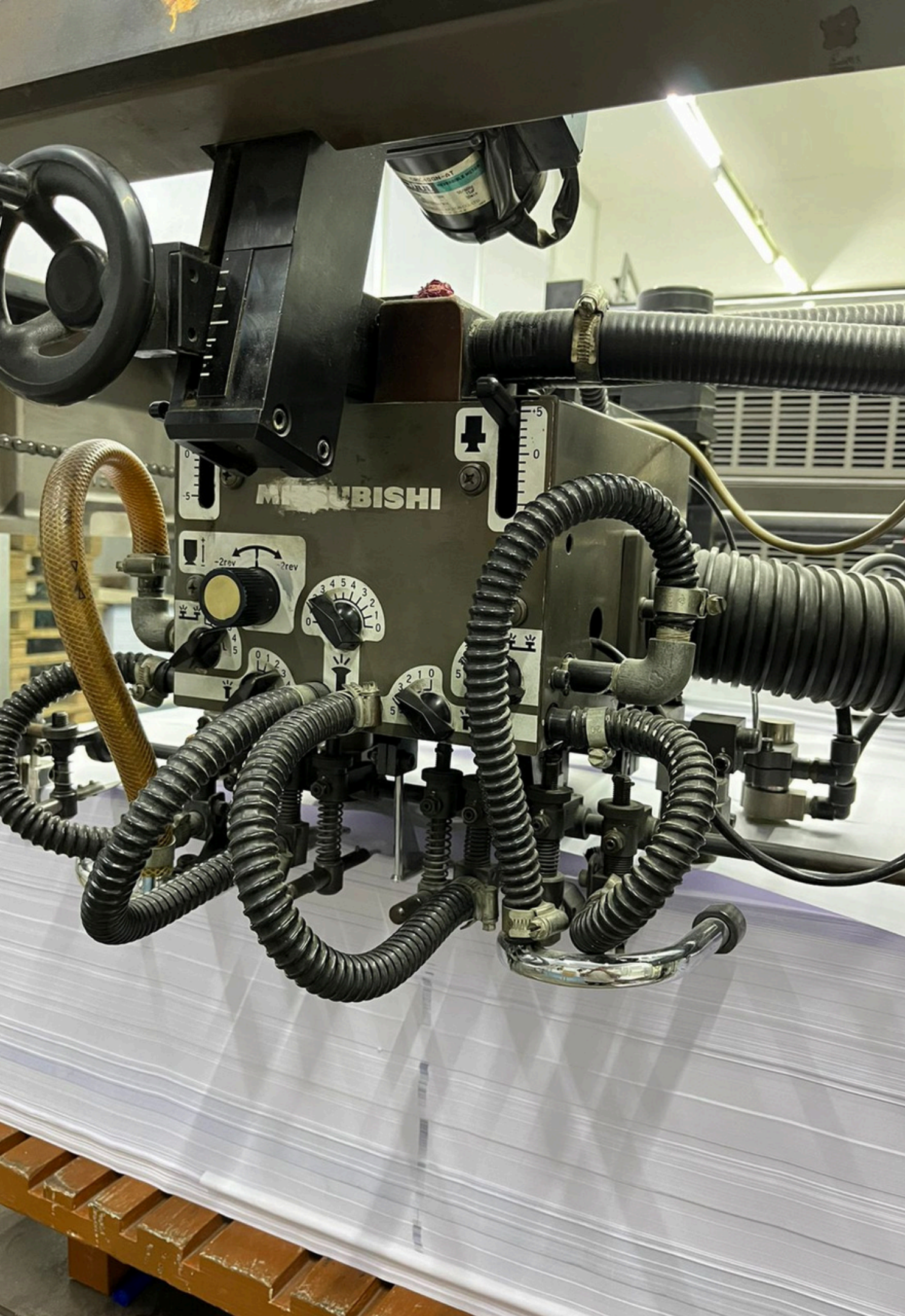
Our Products



Custom Printing and Perfect Binding



Custom Printing and Saddle Stitching



The Process

1

PRE-PRESS

This stage involves preparing the digital files for printing, including designing, typesetting, color correction, and creating print-ready layouts to ensure accuracy and quality.

2

PRESS

The actual printing process where ink is transferred onto paper or other materials using advanced printing machines for high-quality output.

3

POST PRESS

This includes finishing processes such as binding, laminating, cutting, and packaging to deliver the final product ready for distribution.

Pre-Press



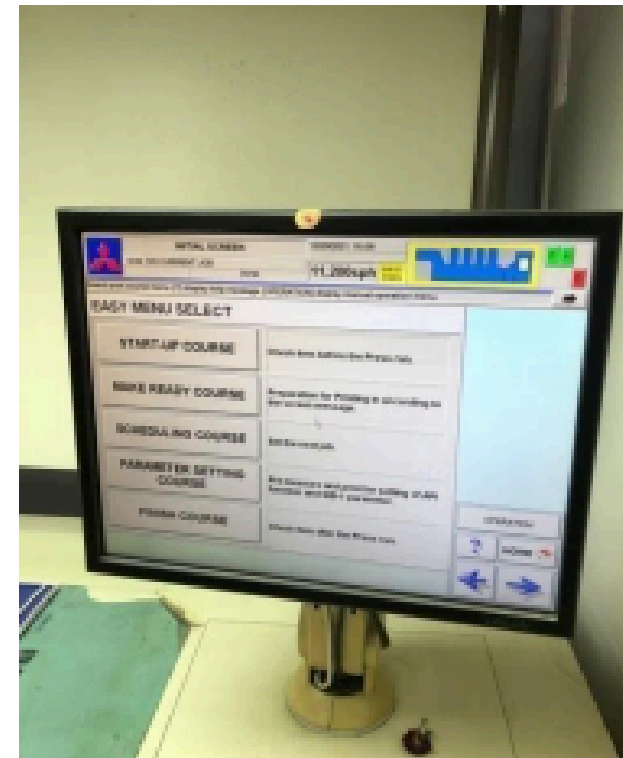
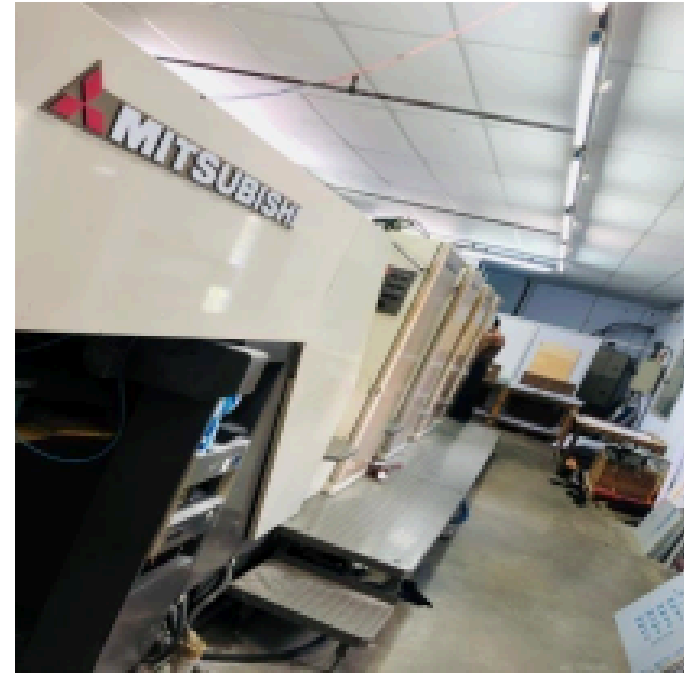
Plate Making Machine



Graphic Designing Team

Press

Printing Unit - (Mitsubishi diamond model)



S.no	Basic information'	capacity
1.	Mitsubishi Diamond	4 colour printing
2.	Rpm	18,000 per h/r
3.	No of sheets per hour per h/r	12,240

Press

PRINTING MACHINERY



S.no	Basic information'	capacity
1.	Mitsubishi Diamond	4 color printing
2.	Rpm	16,000 per h/r
3.	No of sheets per hour per h/r	10,800

FOLDING



FOLDING AND STRITCHING



Production Capacity

Press

- **Mitshibushi (Diamond) - 1,47,000 Sheets Per day**
- **Mitshibushi (Daiya) - 1,30,000 Sheets Per day**

Post Press

- **Perfect Binding - 8,00,000 Books Per Month**
- **Saddle Stitching - 1.3 Million Books Per Month**

Storage Capacity

- Our facility boasts a spacious storage capacity of 30,000 square feet, providing ample space for inventory management and product storage. This large capacity ensures that we can handle large orders efficiently and store materials in an organized manner.
- All products are carefully packaged in-house to meet international shipping standards. Our skilled team uses high-quality packaging materials to ensure that the products remain safe and secure during transit. Once packaged, the products are ready for export to any country, adhering to both domestic and international shipping regulations. We provide timely and reliable delivery to clients globally, ensuring customer satisfaction with our products and services.

A solid yellow vertical bar is located on the left side of the image, extending from the top to the bottom.

Gallery

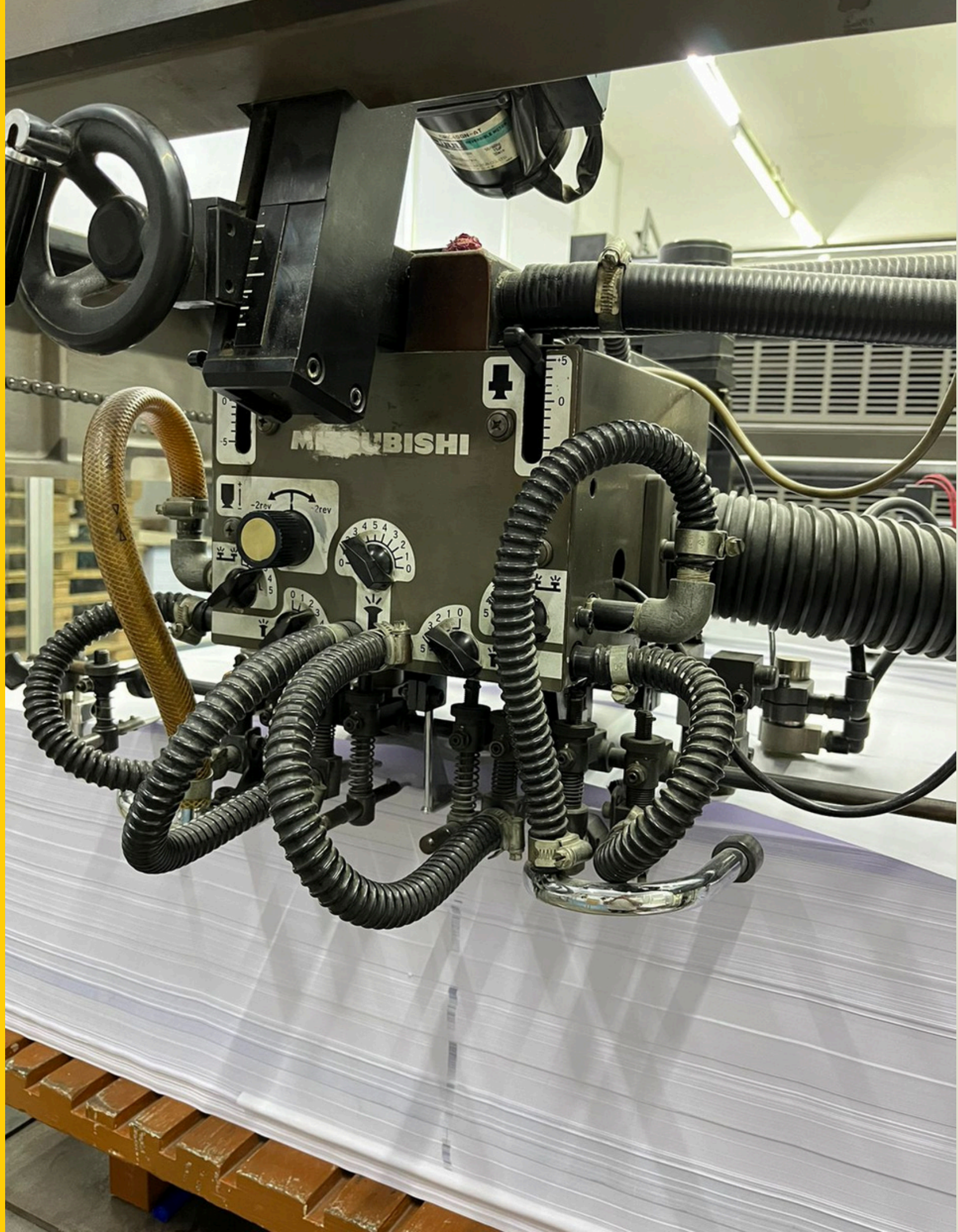
STORAGE AREA



STORAGE AREA



PRESS



PRESS



POST PRESS



FACTORY VIEW

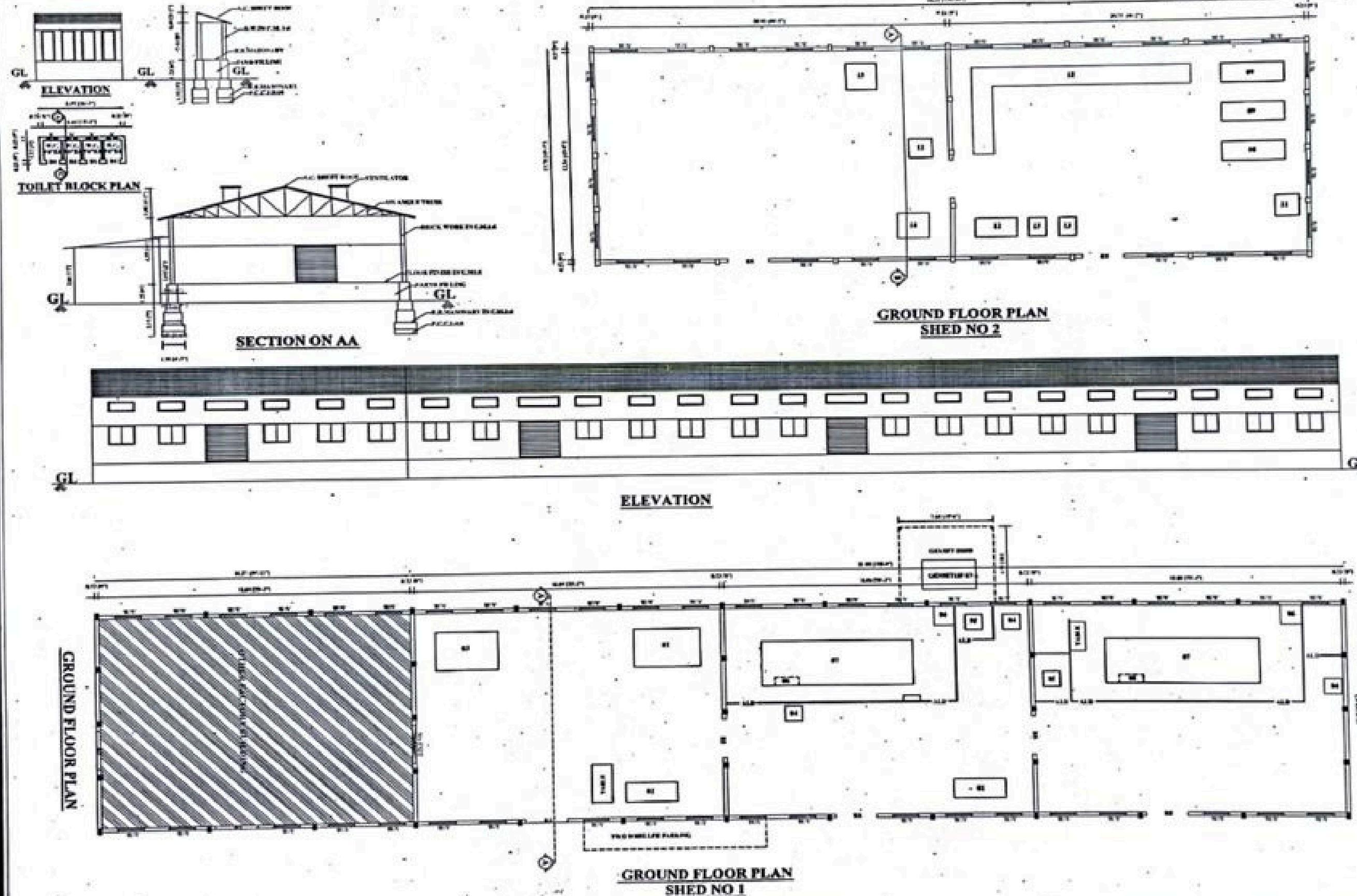


PLAN SHOWING THE PROPOSED INSTALLATION OF A.C.SHEET ROOF FACTORY BUILDING IN 3 / 1447 / 12,

SATTUR ROAD, SIVAKASI, VIRUDHUNAGAR DISTRICT, 626189.

NAME OF THE FACTORY:- M/S.SUN PUBLICATIONS,

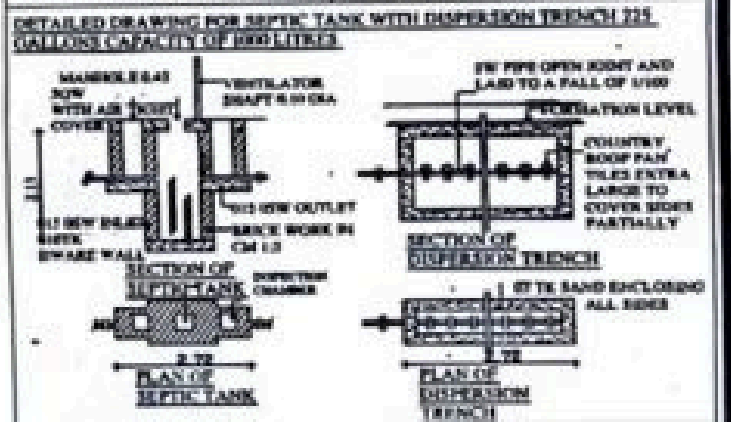
SHEET NO :-1/2



PROPOSED INSTALLATIONS

SYM	NAME OF MACHINE	NOS	EACH H.P	TOTAL H.P
01	SINGLE COLOUR OFFSET M.C	01	18.00	18.00
02	CUTTING MACHINE	02	6.00	12.00
03	LAMINATION MACHINE	01	10.00	10.00
04	CHILLING UNIT	02	2.00	4.00
05	A.C. COMPRESSOR	02	2.00	4.00
06	PROGRAMMING UNIT	02	1.00	2.00
07	MULTI COLOUR OFFSET M.C	02	47.00	94.00
08	COMPRESSOR	02	2.00	4.00
09	FOLDING MACHINE	02	8.00	16.00
10	PACKING MACHINE	01	3.00	3.00
11	COUNTING MACHINE	01	2.00	2.00
12	PINNING UNIT	02	4.00	8.00
13	CREASING MACHINE	02	2.00	4.00
14	TRIMMER MACHINE	01	3.00	3.00
15	PASTING MACHINE	01	3.00	3.00
TOTAL H.P				189.00HP
G.I. - GENSET				175.00 KVA

DETAILS OF JOINARIES		GRADE/IDIAL
DESCRIPTION	METRE	
SI - BOLLARD FIXTURE	2.4X 2.4	
ALD - ALUMINIUM DOOR	1.00X 2.14	
SI - DOOR	0.75 X 2.14	
SI - WINDOW	0.75 X 0.75	
W - WINDOW	1.50 X 1.50	
V - VENTILATOR	1.00X 0.50	



DISTANCE BETWEEN MACHINE TO MACHINE - 1 M
 DISTANCE BETWEEN MACHINE TO WALL - 1 M
 ALL DOORS AND WINDOWS ARE OPEN OUTWARDS

AREA DETAILS	
DESCRIPTION	AREA IN SQUARE METRE
AREA OF THE MACHINERY HALL SHED - 01	175.00
AREA OF THE MACHINERY HALL SHED - 02	204.00
AREA OF THE MACHINERY HALL SHED - 03	240.00
AREA OF THE NET OPEN	100.00
CLEAR AIR SPACE	200.00 CU.M

APPLICANT: _____ ENGINEER: _____

Factory Location and Accessibility

- Our factory is strategically located near the Tuticorin Port, ensuring seamless logistics and reduced transit times for exports.
- Our factory is designed with ample road access, allowing large containers to easily enter and exit the premises. This ensures efficient handling and transportation of goods, making the shipping process smooth and hassle-free.